

Datenblatt LX 1990

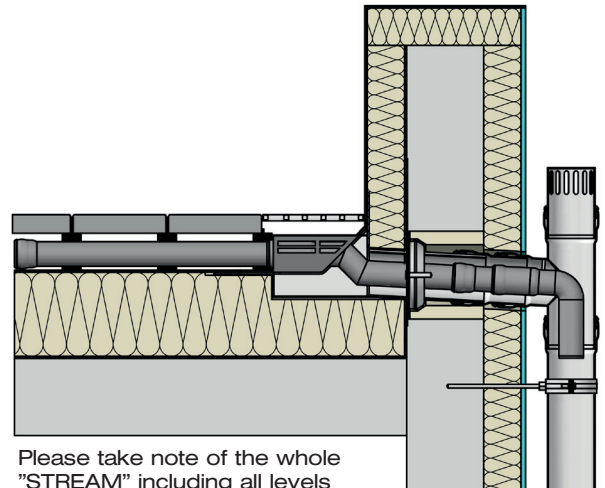
LORO-X DUOSTREAM Cascade drainage for roof terrace

Emergency drainage

Gravity flow

Silent

Discharge rate:	max. 2,2 l/sec
Water height:	75 mm
Roof penetration:	-
Diameter:	DN 100
LX-Number:	LX 1990
Weir height:	0 mm
Drain:	ventilated
Downpipe:	ventilated
Downpipe height:	min 2,5 m
Drainage:	on floor
Flange:	Bonding flange



Please take note of the whole "STREAM" including all levels while designing the system

LX 1990 Piece list

1 x Art.-No. choose drain on page two!

1 x Art.-Nor. 01401.100X Pipe with one socket

1 x Art.-Nor. 01401.050X Pipe with one socket

1 x Art.-No. 13500.100X Branch with bend

1 x Art.-No. 13217.100X Ventilation piece

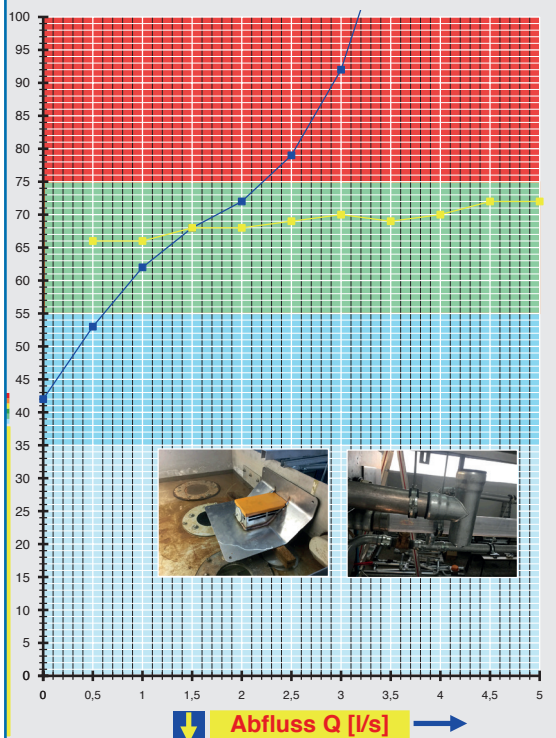
1 x Art.-No. 13242.DB0X, Branch with bend for redirecting the overpressure flow

4 x Art.-No. 00911.050X Sealing elements

2 x Art.-No. 00911.100X Sealing elements

1 x Art.-No. 00986.000X Lubricant

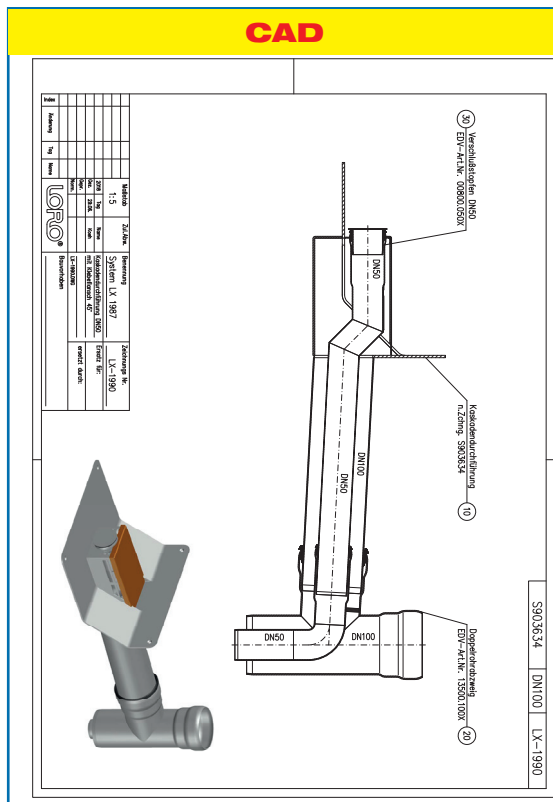
hQ - Head Discharge curve



Abfluss Q [l/s]

Systempower

CAD



Systemshape

Water height	mm	25	30	35	40	45	50	55	60	65	70	75	80	85	90	95	100
Discharge	l/sec	-	-	-	-	-	-	0,35	0,6	1,2	1,75	2,2	2,5	2,7	2,9	3,05	3,15

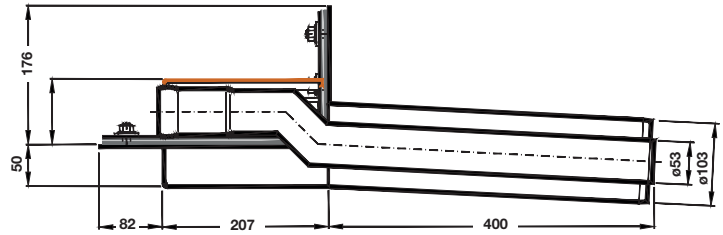
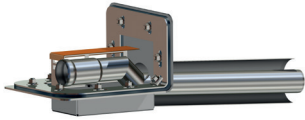
Chosse drain for piece list on page one!

DN 100

LX1990-1X

Drain: Art.-No. 13474.100X

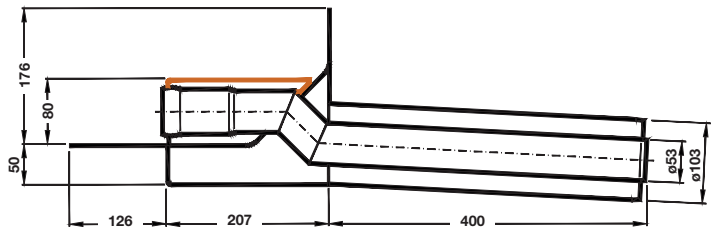
Emergency drainage
drainage for roof terrace
with clamping flange 90°



LX1990-3X

Drain: Art.-No. 13471.100X

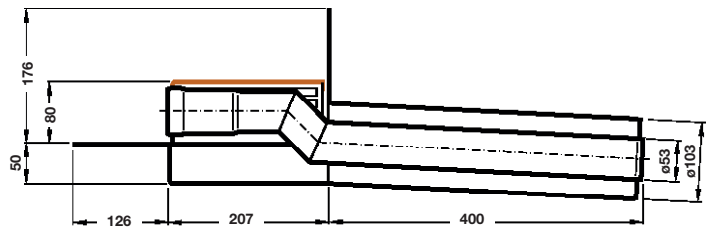
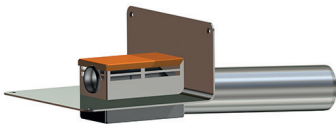
Emergency drainage
drainage for roof terrace
with bonding flange 45°



LX1990-21X

Drain: Art.-No. 13472.100X

Emergency drainage
drainage for roof terrace
with bonding flange 45°



LORO-Branch with bend - Pipe in Pipe-
for redirecting the overpressure flow in the following
downpipe, made of galvanized steel

Art.-No. 13500.100X
Weight: 3,1 kg



LORO-X Ventilation piece
for downpipe ventilation,
made of galvanized steel,
DN 100

Art.-No. 13217.100X
Weight: 0,7 kg



LORO-Roof terrace deflection
from downpipe (DN 100)
into offset over roof terrace (DN 50)

Art.-No. 13242.DB0X
Weight: 1,6 kg



LORO-X Pipe with one socket,
made of galvanized steel
length 250 mm
Art.-No. 01401.050X
Art.-No. 01401.100X



LORO-Sealing elements

Art.-No. 00911.050X
Art.-No. 00911.100X